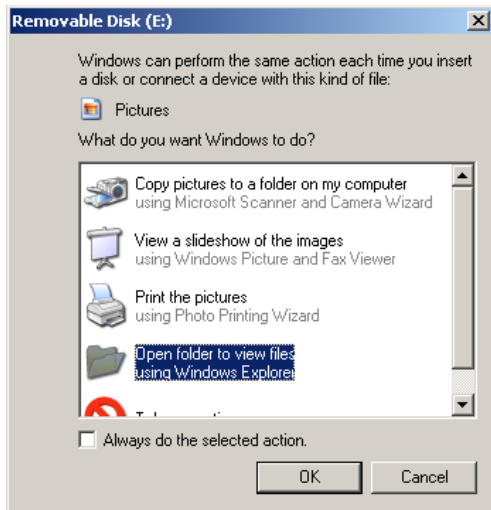


## Using Café Scribe Portable from your Flash Drive on Campus

(This document will assist you in accessing the Café Scribe Portable Player on your flash drive while on campus or on a different computer.)

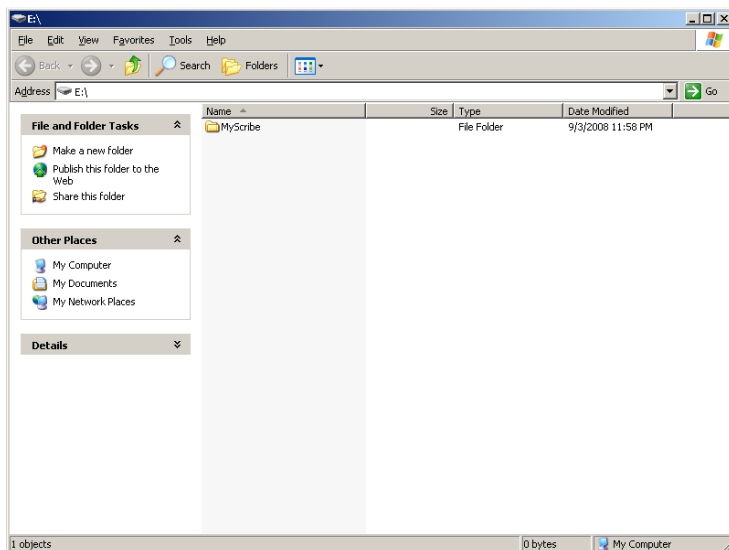
Insert your Flash Drive into any of the USB ports on the computer. You can use this on front USB ports of a computer.

You will receive the following pop-up:

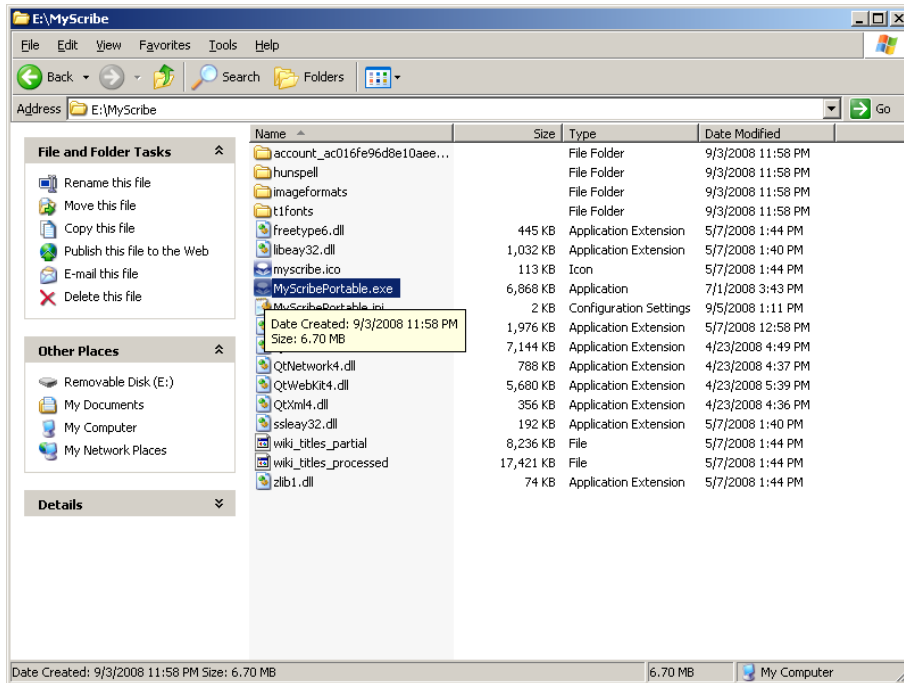


By default the “Open folder to view files using Windows Explorer” should be selected, as shown above. If not, highlight this selection and click on the “OK” button.

This will open up Windows Explorer for the drive that is associated with your flash drive.

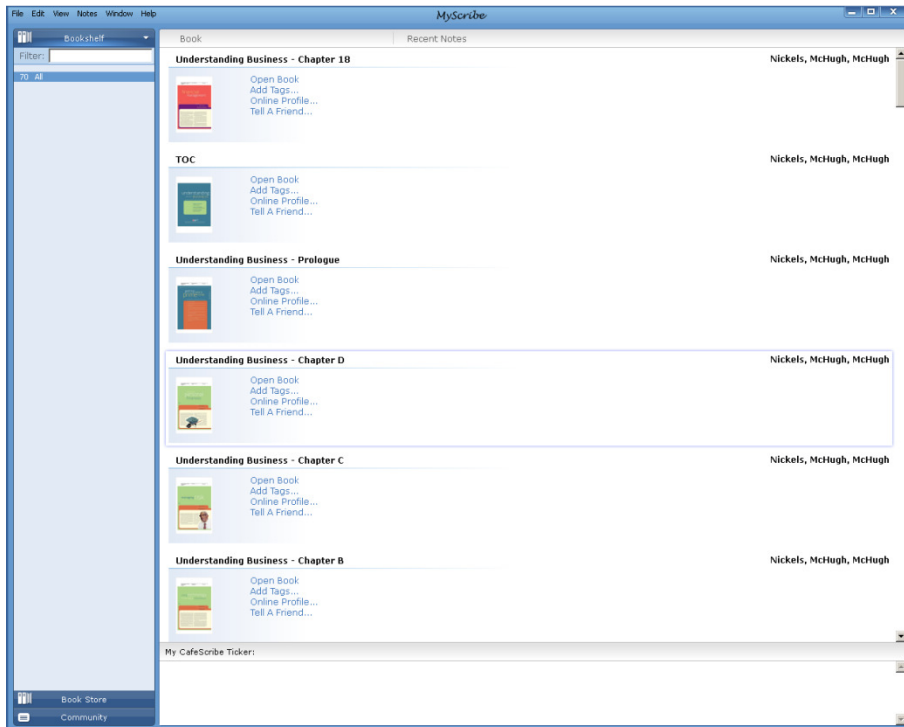


Double click on the file named “MyScribe”.

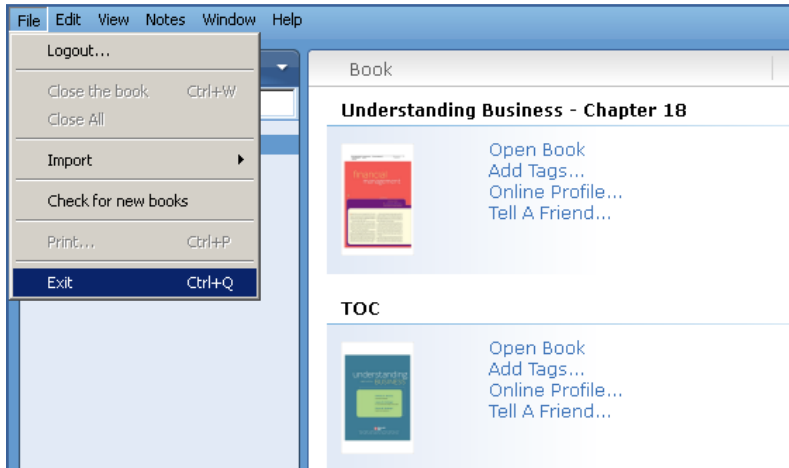


In the list look for the executable that is called “MyScribePortable.exe”. Double click on this to open it.

It will take a few minutes for the viewer and your books to load. Click on the desired chapter and you are ready to read, highlight, or add notes to your selection.



When you are ready to close out the viewer, click on "FILE" then click on "EXIT". This will close out your viewer and any highlights or notes which you have entered will be saved.



Remove your flash drive from the machine that you are currently using.